

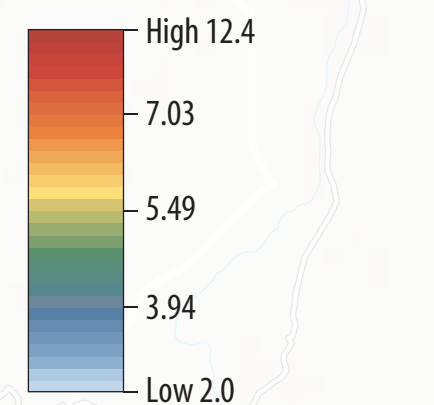


# WIND RESOURCE

## Ethiopia



Simulated mean wind speed at  
100 m height above ground level m/s



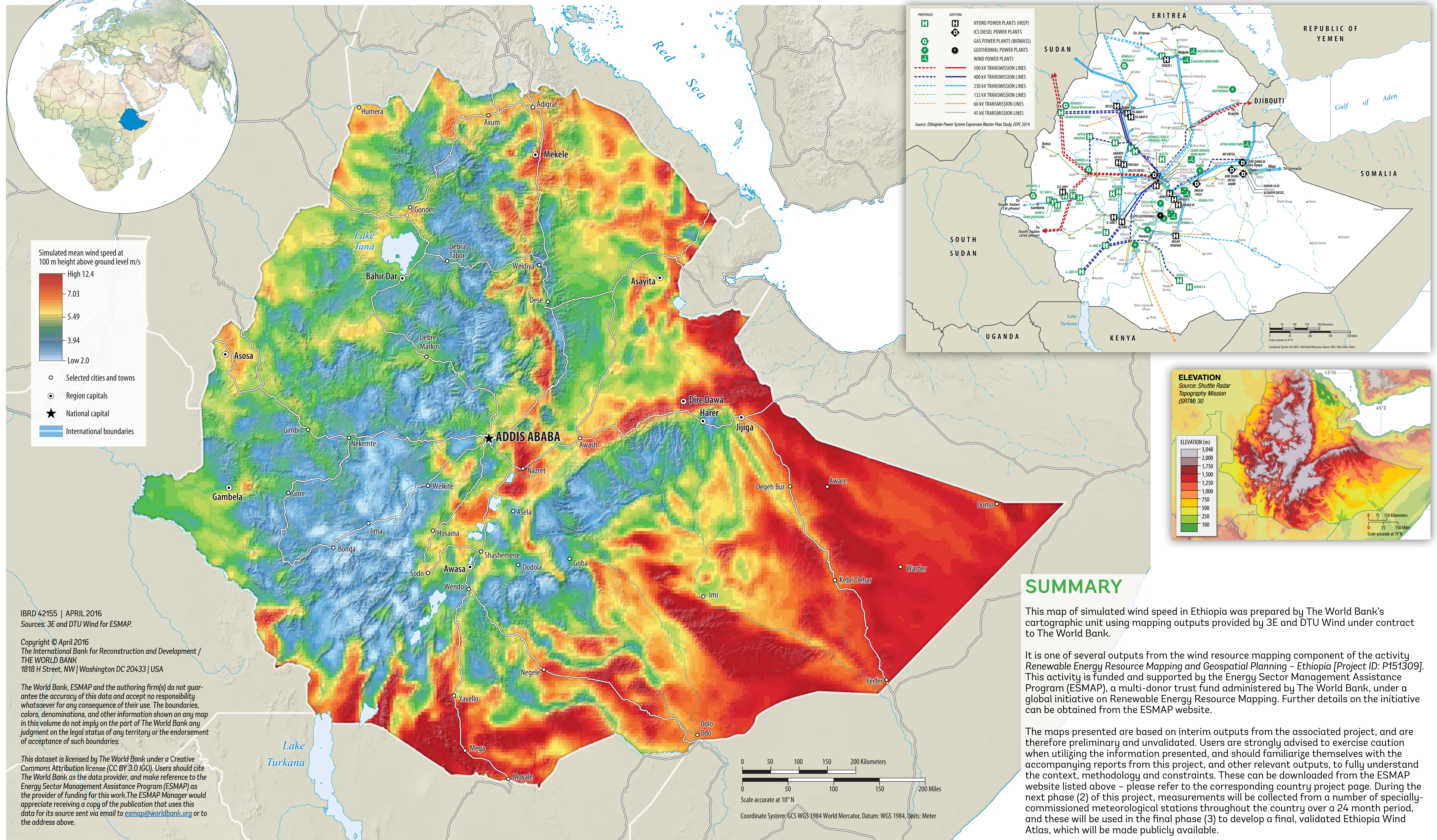
- Selected cities and towns
- Region capitals
- ★ National capital
- International boundaries

IBRD 42155 | APRIL 2016  
Sources: 3E and DTU Wind for ESMAP.

Copyright © April 2016  
The International Bank for Reconstruction and Development /  
THE WORLD BANK  
1818 H Street, NW | Washington DC 20433 | USA

The World Bank, ESMAP and the authoring firm(s) do not guarantee the accuracy of this data and accept no responsibility whatsoever for any consequence of their use. The boundaries, colors, denominations, and other information shown on any map in this volume do not imply on the part of The World Bank any judgment on the legal status of any territory or the endorsement of acceptance of such boundaries.

This dataset is licensed by The World Bank under a Creative Commons Attribution license (CC BY 3.0 IGO). Users should cite The World Bank as the data provider, and make reference to the Energy Sector Management Assistance Program (ESMAP) as the provider of funding for this work. The ESMAP Manager would appreciate receiving a copy of the publication that uses this data for its source sent via email to [esmap@worldbank.org](mailto:esmap@worldbank.org) or to the address above.



## SUMMARY

This map of simulated wind speed in Ethiopia was prepared by The World Bank's cartographic unit using mapping outputs provided by 3E and DTU Wind under contract to The World Bank.

It is one of several outputs from the wind resource mapping component of the activity *Renewable Energy Resource Mapping and Geospatial Planning – Ethiopia* [Project ID: P151309]. This activity is funded and supported by the Energy Sector Management Assistance Program (ESMAP), a multi-donor trust fund administered by The World Bank, under a global initiative on Renewable Energy Resource Mapping. Further details on the initiative can be obtained from the ESMAP website.

The maps presented are based on interim outputs from the associated project, and are therefore preliminary and unvalidated. Users are strongly advised to exercise caution when utilizing the information presented, and should familiarize themselves with the accompanying reports from this project, and other relevant outputs, to fully understand the context, methodology and constraints. These can be downloaded from the ESMAP website listed above – please refer to the corresponding country project page. During the next phase (2) of this project, measurements will be collected from a number of specially-commissioned meteorological stations throughout the country over a 24 month period, and these will be used in the final phase (3) to develop a final, validated Ethiopia Wind Atlas, which will be made publicly available.